



ITT

Commercial Water

Red Jacket Water Products

MCB Repair Parts

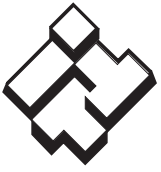
Multi-Stage High Pressure Cast Iron
Centrifugal Booster Pump



Red Jacket Water Products is a brand of
ITT Residential and Commercial Water.

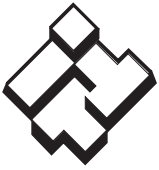
www.redjacketwaterproducts.com

Engineered for life



ITT

RED JACKET WATER PRODUCTS
Commercial Water



ITT

RED JACKET WATER PRODUCTS Commercial Water

MCB NUMBERING SYSTEM

The various versions of the MCB Series are identified by a product code number on the pump label. This number is also the catalog number for the pump. The meaning of each digit in the product code number is shown below. The following are the standard product numbers and are built with Single Phase ODP motors and standard staging and seals.

Order No.	HP	Phase	Voltage	Enclosure	Stages	
50MCB7	1/2	1	115-230	ODP	9	
75MCB7	3/4				13	
100MCB7	1				16	
75MCB10	3/4	1	115-230	ODP	8	
100MCB10	1				10	
150MCB10	1 1/2				15	
200MCB10	2				17	
300MCB10	3				19	
75MCB18	3/4	1	115/230	ODP	5	
100MCB18	1				7	
150MCB18	1 1/2				9	
200MCB18	2				13	
300MCB18	3				15	
					230	

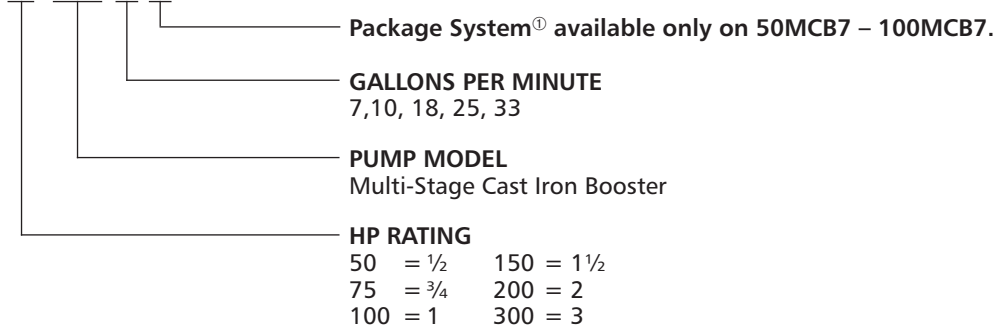
Order No.	HP	Phase	Voltage	Enclosure	Stages
75MCB25	3/4	1	115/230	ODP	5
100MCB25	1				7
150MCB25	1 1/2				9
200MCB25	2				10
300MCB25	3				14
100MCB33	1	1	115/230	ODP	5
150MCB33	1 1/2				7
200MCB33	2				9
300MCB33	3				13

MCB NUMBERING SYSTEM

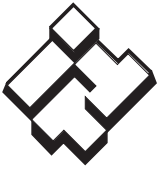
For optional motor enclosures, seals and three phase configurations use the following product code system.

Example Code

50 MCB 7 P

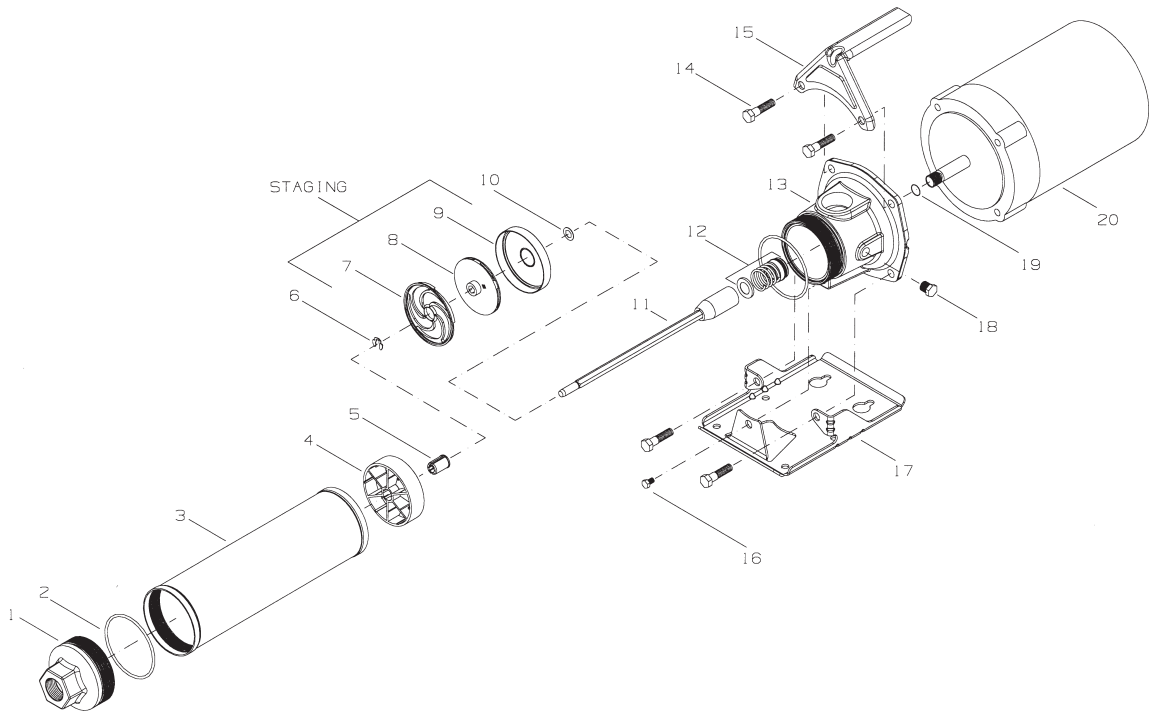


① A 50MCB7P, 75MCB7P or 100MCB7P also includes: 4' long suction hose, two 1" x 3/4" hose adapters, a 10' power cord with GFI molded plug and a carry handle.



ITT

RED JACKET WATER PRODUCTS Commercial Water



MCB STANDARD REPAIR PARTS LIST

HP	Current Models				
	MCB7	MCB10	MCB18	MCB25	MCB33
	Number of Stages				
1/2	9				
3/4	13	8	5	5	
1	16	10	7	7	5
1 1/2		15	9	9	7
2		17	13	10	9
3			15	14	13

Item No.	Description		Material	Qty.	HP	Part Number					
1	Discharge Head		Cast Iron	1		1K457					
			304SS			1K347					
2	O-Ring Casing	Standard	BUNA	2	All	5K225					
		Optional	EPR			5K281					
		Optional	Viton			5K282					
3	Casing		304SS	1	1	1/2	7K1800				
						3/4	7K1799	7K1803	7K1807	7K1811	
						1	7K1801	7K1804	7K1808	7K1812	7K2474
						1 1/2		7K1805	7K1798	7K1813	7K2571
						2		7K1806	7K1809	7K1814	7K2475
						3			7K1810	7K1815	7K2476
4	Bearing Spider		GF Polycarbonate	= stag- ing	All	7K1372					
5	Bearing		Urethane			7K1740					
6	Klip Ring		301SS			7K817					
7	Diffuser		GF Polycarbonate			7K995	7K17	7K20	7K20	7K1590	
8	Impeller					7K1343	7K35	7K1334	7K19	7K1739	
9	Bowl					7K478	7K478	7K858	7K18	7K1584	
10	Shim			Varies	7K155						
11	Shaft/Coupling Assembly		304SS	1	1	1/2	7K1820				
						3/4	7K1819	7K1823	7K1827	7K1831	
						1	7K1821	7K1824	7K1828	7K1832	7K2465
						1 1/2		7K1825	7K1818	7K1833	7K2561
						2		7K1826	7K1829	7K1834	7K2464
						3			7K1830	7K1835	7K2463
12	Mechanical Seal		Carb./Ceramic/BUNA	1		10K10					
13	Motor Adapter		Cast Iron			1K458					
14	Screw, motor to motor adpater		Steel	4		1K348					
						13K69					
15	Handle			1	All	4K534					
16	Screw, base to motor adapter		304SS			13K257					
17	Base		Steel			4K533					
18	Pipe Plug		316SS			6K2					
						6K141					
19	O-Ring Coupling	Standard	BUNA			5K283					
		Optional	EPR	5K284							
		Optional	Viton	5K285							
20	Deflector		BUNA			5K7					
21	Motor		See Repair Part Motor List Below								
22	Power Cord (Not shown)		14-3 SJO or SJOW/SJOW-A	1	All	4K191					



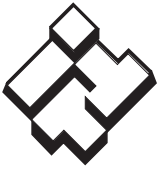
ITT

RED JACKET WATER PRODUCTS Commercial Water

MCB CLOSE-COUPLED MOTORS 3500 RPM

HP	Single-Phase, 60 HZ, 115/230 V**, 56J Frame		
	Open, Drip-Proof		
	Order Number	Maximum Amps	Weight (lbs.)
1/2	E04853EMRD	10.6/5.3	16
3/4	E05853EMRD	14.0/7.0	19
1	E06853EMRD	17.2/8.6	22
1 1/2	E07858EMRD	18.0/9.0	31
2	E08854BBEMRD	22.4/11.2	33
3	E09854BBEMRD	14.2	37

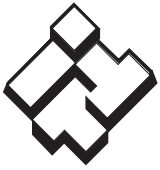
Note:** All 3 HP Single Phase motors are 230V only.



ITT

RED JACKET WATER PRODUCTS
Commercial Water

NOTES



ITT

Commercial Water



Red Jacket Water Products is a licensed trademark. The ITT Engineered Blocks Symbol are registered trademarks and tradenames of ITT Corporation.

SPECIFICATIONS ARE SUBJECT TO CHANGE WITHOUT NOTICE.

RRJMCB January, 2007

© 2007 ITT Corporation

Engineered for life