



ITT

Residential Water Systems

Red Jacket Water Products

4" Enduro Repair Parts
50 and 60 Hz

*Pumps with splined round
shafts built up to Q1, 2008.*



Red Jacket Water Products is a brand of ITT Corporation.

www.redjacketwaterproducts.com

Engineered for life

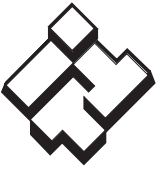


ITT

RED JACKET WATER PRODUCTS Residential Water Systems

Pumps with splined round shafts built until Q1, 2008.

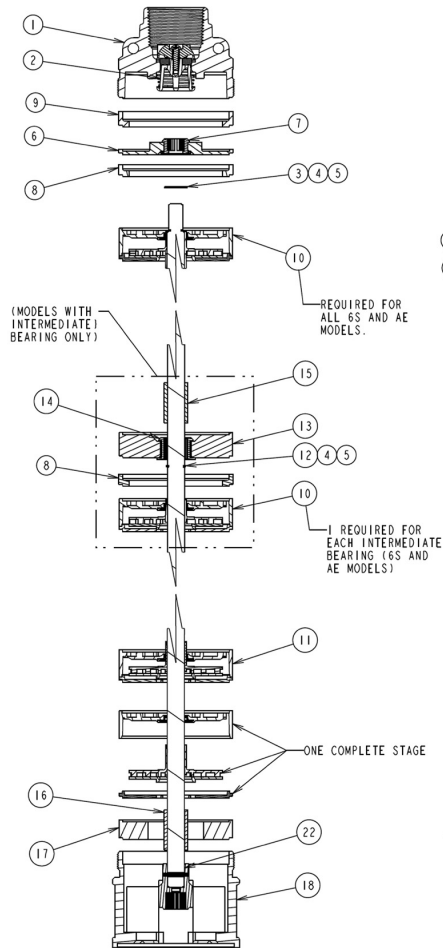
| Item No. | Description | 60 Hz | | | | | | Item No. | Description | 50 Hz | | | | | |
|----------|-------------------------------------|---------------|--------|--------|--------|--------|--------|----------|-------------------------------------|-------------------------------------|----------|--------|--------|--------|--------|
| | | Current Model | | | | | | | | Current Model | | | | | |
| | | HP | 6S (4) | 8S (5) | 12S | 20S | 25S | | | HP | AE(1)(4) | BC(1) | CC(1) | GC(1) | |
| | Number of Stages | 1/2R | – | – | 8 | – | – | | Number of Stages | 1/2 | 15 | 9 | 5 | – | |
| | | 1/2 | 17 | 12 | 9 | 5 | – | | | 3/4 | 22 (1) | 12 | 8 | 6 | |
| | | 3/4 | 21 (1) | 16 | 12 | 6 | – | | | 1 | 29 (1) | 15 | 10 | 9 | |
| | | 1 | 25 (1) | 21 (2) | 14 | 8 | 7 | | | 1 1/2 | 44 (2) | 19 (3) | 14 | 13 | |
| | | 1 1/2 | 32 (1) | 25 (2) | 18 (2) | 11 | 10 | | | 1 1/2 | – | 25 (3) | – | – | |
| | | 2 | – | 30 (2) | 23 (2) | 14 | 12 | | | 2 | – | 32 (3) | 19 (3) | 17 (3) | |
| | | 3 | – | 43 (3) | 32 (2) | 19 (2) | 17 | | | 3 | – | – | 26 (3) | 26 (3) | |
| | | 5 | – | – | – | 30 (2) | 28 (2) | | | | | | | | |
| 1 | Discharge head/CV assembly | 7K2997 | | | | | | 1 | Discharge head/CV assembly | 7K2998 | | | | | |
| 2 | Check valve assembly | 7K2359 | | | | | | 2 | Check valve assembly | 7K2359 | | | | | |
| 3 | Upper retaining ring | 13K325 | – | – | – | – | | 3 | Upper retaining ring | 13K325 | – | – | – | | |
| 4 | Shim – 0.020 | 7K2364 | – | – | – | – | | 4 | Shim – 0.020 | 7K364 | – | – | – | | |
| 5 | Shim – 0.042 | 7K2365 | – | – | – | – | | 5 | Shim – 0.042 | 7K2365 | – | – | – | | |
| 6 | Upper bearing housing | 7K2361 | | | | | | 6 | Upper bearing housing | 7K2361 | | | | | |
| 7 | Upper bearing | 7K2362 | | | | | | 7 | Upper bearing | 7K2362 | | | | | |
| 8 | 0.300 Adapter ring (1)(2) | 7K2360 | | | | | | 8 | 0.300 Adapter ring (1)(2) | 7K2360 | | | | | |
| 9 | 0.400 Adapter ring | 7K2363 | – | – | – | – | | 9 | 0.400 Adapter ring | 7K2363 | – | – | – | | |
| 10 | Machined stage assembly (4)(5) | 7K2351 | 7K2353 | – | – | – | | 10 | Machined stage assembly (4) | 7K2351 | – | – | – | | |
| 11 | Stage assembly | 7K2350 | 7K2352 | 7K2354 | 7K2355 | 7K2356 | | 11 | Stage assembly | 7K2350 | 7K2354 | 7K2355 | 7K2356 | | |
| 12 | Intermediate retaining ring (1) | 13K318 | – | – | – | – | | 12 | Intermediate retaining ring (1)(2) | 13K318 | – | – | – | | |
| 13 | Intermediate bearing hsg. (1)(2)(3) | 7K2369 | | | | | | 13 | Intermediate bearing hsg. (1)(2)(3) | 7K2369 | | | | | |
| 14 | Intermediate bearing (1)(2)(3) | 7K2370 | | | | | | 14 | Intermediate bearing (1)(2)(3) | 7K2370 | | | | | |
| 15 | Intermediate shaft sleeve (1)(2)(3) | 7K2368 | 7K2366 | | | | – | | 15 | Intermediate shaft sleeve (1)(2)(3) | 7K2368 | 7K2366 | | | |
| 16 | Lower shaft sleeve | 7K2368 | – | – | – | – | | 16 | Lower shaft sleeve | 7K2368 | – | – | – | | |
| 17 | Lower adapter ring | 7K2372 | | | | | | 17 | Lower adapter ring | 7K2372 | | | | | |
| 18 | Motor adapter | 7K2374 | | | | | | 18 | Motor adapter | 7K2374 | | | | | |
| 19 | Inlet strainer | 7K2375 | | | | | | 19 | Inlet strainer | 7K2375 | | | | | |
| 20 | Cable guard screw | 13K91 | | | | | | 20 | Cable guard screw | 13K91 | | | | | |
| 21 | Casing | 1/2R | – | – | 7K2319 | – | – | 21 | Casing | 1/2 | 7K2331 | 7K2321 | 7K2316 | – | |
| | | 1/2 | 7K2534 | 7K2325 | 7K2321 | 7K2316 | – | | | | 3/4 | 7L2340 | 7K2326 | 7K2319 | 7K2318 |
| | | 3/4 | 7K2539 | 7K2332 | 7K2526 | 7K2317 | – | | | | 1 | 7K2346 | 7K2330 | 7K2322 | 7K2323 |
| | | 1 | 7K2544 | 7K2537 | 7K2328 | 7K2319 | 7K2320 | | | | 1 1/2 | 7K2353 | 7K2336 | 7K2328 | 7K2333 |
| | | 1 1/2 | 7K2550 | 7K2343 | 7K2335 | 7K2324 | 7K2327 | | | | 1 1/2 | – | 7K2343 | – | – |
| | | 2 | – | 7K2347 | 7K2341 | 7K2528 | 7K2529 | | | | 2 | – | 7K2350 | 7K2336 | 7K2338 |
| | | 3 | – | 7K2352 | 7K2350 | 7K2336 | 7K2338 | | | | 3 | – | – | 7K2345 | 7K2349 |
| | | 5 | – | – | – | 7K2348 | 7K2351 | | | | | | | | |
| 22 | Shaft assembly | 1/2R | – | – | 7K2605 | – | – | 22 | Shaft assembly | 1/2 | 7K2578 | 7K2594 | 7K2603 | – | |
| | | 1/2 | 7K2579 | 7K2588 | 7K2594 | 7K2603 | – | | | | 3/4 | 7K2582 | 7K2595 | 7K2605 | 7K2610 |
| | | 3/4 | 7K2581 | 7K2589 | 7K2595 | 7K2604 | – | | | | 1 | 7K2585 | 7K2597 | 7K2606 | 7K2610 |
| | | 1 | 7K2584 | 7K2590 | 7K2596 | 7K2605 | 7K2611 | | | | 1 1/2 | 7K2587 | 7K2599 | 7K2596 | 7K2613 |
| | | 1 1/2 | 7K2586 | 7K2591 | 7K2598 | 7K2607 | 7K2595 | | | | 1 1/2 | – | 7K2601 | – | – |
| | | 2 | – | 7K2592 | 7K2600 | 7K2596 | 7K2612 | | | | 2 | – | 7K2602 | 7K2599 | 7K2614 |
| | | 3 | – | 7K2593 | 7K2602 | 7K2599 | 7K2614 | | | | 3 | – | – | 7K2608 | 7K2615 |
| | | 5 | – | – | – | 7K2609 | 7K2616 | | | | | | | | |
| 23 | Cable guard | 1/2R | – | – | 7K2605 | – | – | 23 | Cable guard | 1/2 | 7K2492 | 7K2483 | 7K2378 | – | |
| | | 1/2 | 7K2496 | 7K2487 | 7K2483 | 7K2478 | – | | | | 3/4 | 7K2502 | 7K2488 | 7K2481 | 7K2480 |
| | | 3/4 | 7K2501 | 7K2494 | 7K2488 | 7K2479 | – | | | | 1 | 7K2508 | 7K2492 | 7K2484 | 7K2485 |
| | | 1 | 7K2505 | 7K2499 | 7K2490 | 7K2481 | 7K2482 | | | | 1 1/2 | 7K2515 | 7K2498 | 7K2490 | 7K2494 |
| | | 1 1/2 | 7K2512 | 7K2504 | 7K2497 | 7K2485 | 7K2488 | | | | 1 1/2 | – | 7K2505 | – | – |
| | | 2 | – | 7K2508 | 7K2502 | 7K2490 | 7K2491 | | | | 2 | – | 7K2512 | 7K2498 | 7K2499 |
| | | 3 | – | 7K2514 | 7K2512 | 7K2498 | 7K2499 | | | | | | | | |
| | | 5 | – | – | – | 7K2510 | 7K2513 | | | | | | | | |



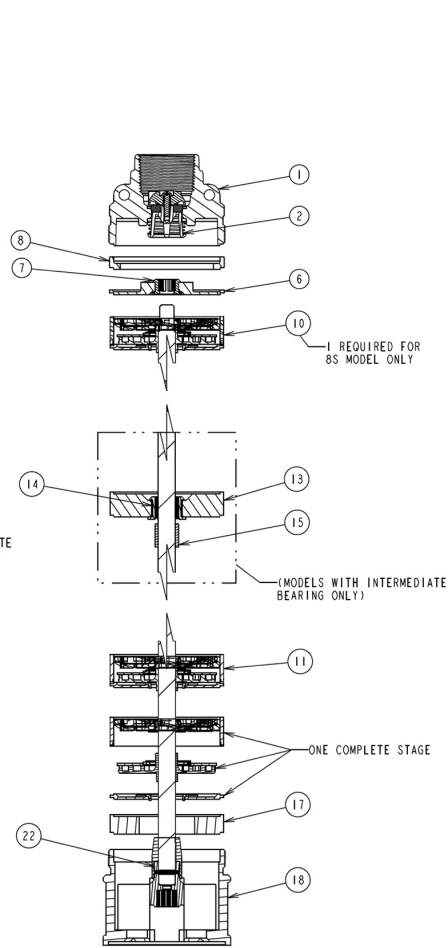
ITT

RED JACKET WATER PRODUCTS Residential Water Systems

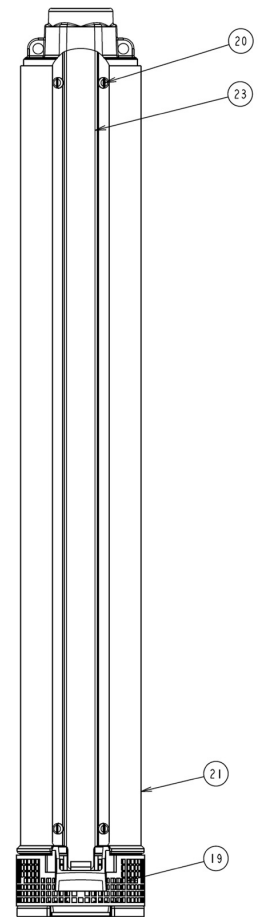
- (1) Model requires one intermediate bearing housing, intermediate bearing, intermediate shaft sleeve, an adapter ring, and an intermediate retainer ring. Order parts separately.
- (2) Model requires one intermediate bearing housing, intermediate bearing, and an intermediate shaft sleeve. Order parts separately.
- (3) Model requires two each of the following: Intermediate bearing housing, intermediate bearing, and an intermediate shaft sleeve. Order parts separately.
- (4) Model requires at least one machined stage assembly at upper retaining ring. Models that have an intermediate bearing also require one machined stage assembly at each required intermediate bearing. Number of stages includes required machined stage assemblies.
- (5) Model requires one machined stage assembly. Number of stages includes required machined stage assembly.



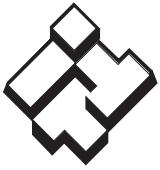
AE, 6S - 5 GAL.



8S - 7 GAL.
12S, BC - 10 GAL.
20S, CC - 18 GAL.
25S, GC - 22 GAL.



TYP. ALL MODELS



ITT

Residential Water Systems



Red Jacket Water Products is a licensed trademark. Enduro and the ITT Engineered Blocks Symbol are registered trademarks and tradenames of ITT Corporation.

SPECIFICATIONS ARE SUBJECT TO CHANGE WITHOUT NOTICE.

RRJENDURO January, 2008
© 2008 ITT Water Corporation

Engineered for life