



ITT

RRJENDUR2

Residential Water Systems

Red Jacket Water Products

4" Enduro Repair Parts

50 Hz and 60 Hz Models

*Pumps with hex shafts
built after Q1, 2008.*



Red Jacket Water Products is a brand of ITT Corporation.

www.redjacketwaterproducts.com

Engineered for life

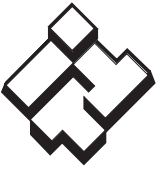


ITT

RED JACKET WATER PRODUCTS Residential Water Systems

Enduro 60 Hz pumps with hex shafts built after Q1, 2008.

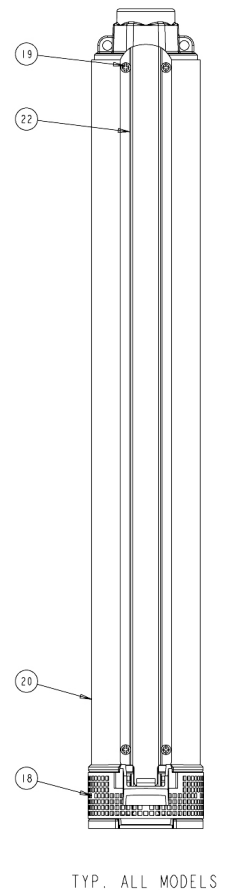
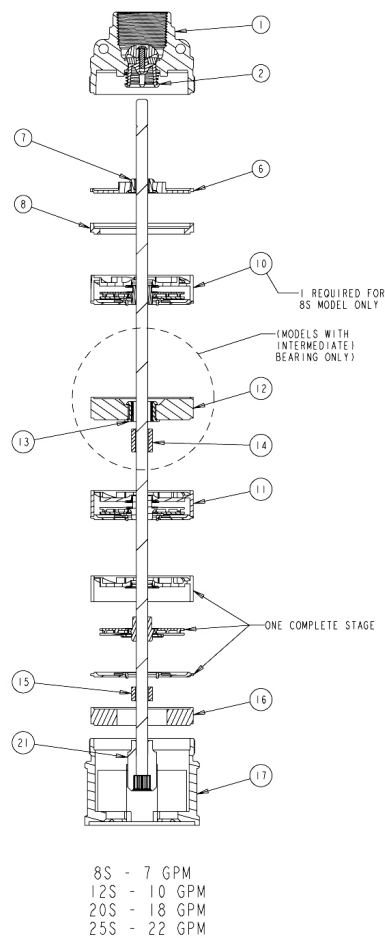
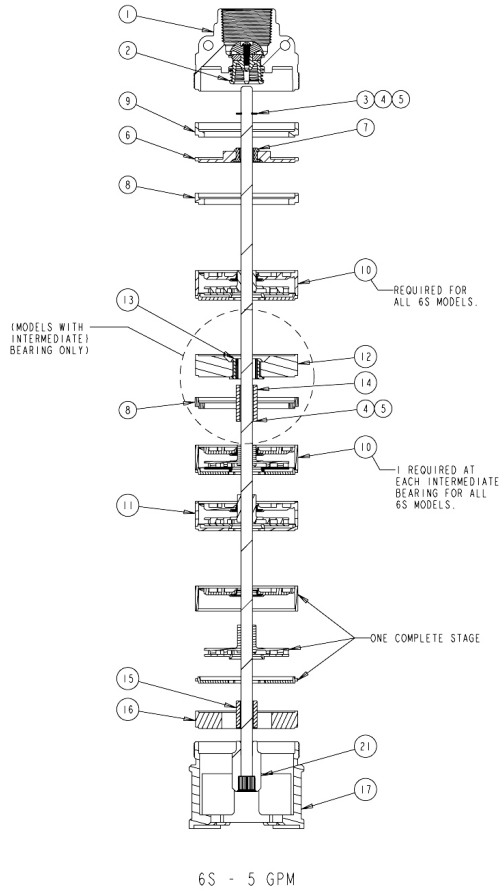
Item No.	Description	Current Model					
		HP	6S (4)	8S (5)	12S	20S	25S
	Number of Stages	1/2R	–	–	8	–	–
		1/2	17	12	9	5	–
		3/4	21 (1)	16	12	6	–
		1	25 (1)	21 (2)	14	8	7
		1 1/2	32 (1)	25 (2)	18 (2)	11	10
		2	–	30 (2)	23 (2)	14	12
		3	–	43 (3)	32 (2)	19 (2)	17
		5	–	–	–	30 (2)	28 (2)
1	Discharge head/CV assembly	7K2997					
2	Check valve assembly	7K2359					
3	Upper retaining ring	7K817	–	–	–	–	
4	Shim – 0.020	7K155	–	–	–	–	
5	Shim – 0.042	7K2365	–	–	–	–	
6	Upper bearing housing	7K2361					
7	Upper bearing	7K3059					
8	0.300 Adapter ring (1)(2)	7K2360					
9	0.400 Adapter ring	7K2363	–	–	–	–	
10	Machined stage assembly (4)(5)	7K3252	7K3254	–	–	–	
11	Stage assembly	7K3251	7K3253	7K3255	7K3256	7K3257	
12	Intermediate bearing hsg. (1)(2)(3)	7K2369					
13	Intermediate bearing (1)(2)(3)	7K3231					
14	Intermediate shaft sleeve (1)(2)(3)	7K209	7K3056				
15	Lower shaft sleeve	7K1320	7K1336				
16	Lower adapter ring	7K2372					
17	Motor adapter	7K2374					
18	Inlet strainer	7K2375					
19	Cable guard screw	13K91					
20	Casing	1/2R	–	–	7K2519	–	–
		1/2	7K2534	7K2325	7K2521	7K2316	–
		3/4	7K2539	7K2532	7K2526	7K2517	–
		1	7K2544	7K2537	7K2528	7K2519	7K2520
		1 1/2	7K2550	7K2542	7K2535	7K2524	7K2527
		2	–	7K2547	7K2541	7K2528	7K2529
		3	–	7K2552	7K2550	7K2536	7K2537
5	–	–	–	7K2548	7K2551		
21	Shaft assembly	1/2R	–	–	7K3263	–	–
		1/2	7K3243	7K3270	7K3267	7K3219	–
		3/4	7K3241	7K3277	7K3271	7K3260	–
		1	7K3290	7K3234	7K3237	7K3263	7K3265
		1 1/2	7K3298	7K3288	7K3279	7K3269	7K3271
		2	–	7K3293	7K3286	7K3237	7K3273
		3	–	7K3302	7K3300	7K3281	7K3234
5	–	–	–	7K3294	7K3301		
22	Cable Guard	1/2R	–	–	7K2481	–	–
		1/2	7K2496	7K2487	7K2483	7K2478	–
		3/4	7K2501	7K2494	7K2488	7K2479	–
		1	7K2505	7K2499	7K2490	7K2481	7K2482
		1 1/2	7K2512	7K2504	7K2497	7K2485	7K2488
		2	–	7K2508	7K2503	7K2490	7K2491
		3	–	7K2514	7K2512	7K2498	7K2499
5	–	–	–	7K2510	7K2513		

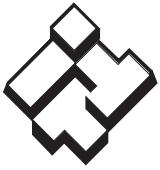


ITT

RED JACKET WATER PRODUCTS Residential Water Systems

- (1) Model requires one intermediate bearing housing, intermediate bearing, intermediate shaft sleeve, a 0.300 adapter ring and an intermediate retainer ring. Order parts separately.
- (2) Model requires one intermediate bearing housing, intermediate bearing and an intermediate shaft sleeve. Order parts separately.
- (3) Model requires two each of the following: Intermediate bearing housing, intermediate bearing and an intermediate shaft sleeve. Order parts separately.
- (4) Model requires at least one machined stage assembly at upper retaining ring. Models that have an intermediate bearing also require one machined stage assembly at each required intermediate bearing. Number of stages includes required machined stage assemblies.
- (5) Model requires one machined stage assembly. Number of stages includes required machined stage assembly.





ITT

Residential Water Systems

Enduro 50 Hz pumps with hex shafts built after Q1, 2008.

Item No.	Description	Current Model					
		HP	AE (4)	VB	BC	CC	GC
	Number of Stages	1/2	15	–	9	5	–
		3/4	22 (1)	–	12	8	6
		1	29 (1)	–	15	10	9
		1 1/2	44 (1)	–	19 (2)	14	13
		2	–	–	25 (2)	19 (2)	17
		3	–	–	32 (2)	26 (2)	26 (2)
		5	–	–	–	–	–
1	Discharge head/CV assembly	7K2998					
2	Check valve assembly	7K2359					
3	Upper retaining ring	7K817	–	–	–	–	
4	Shim – 0.020	7K155	–	–	–	–	
5	Shim – 0.042	7K2365	–	–	–	–	
6	Upper bearing housing	7K2361					
7	Upper bearing	7K3059					
8	0.300 Adapter ring (1)(2)	7K2360					
9	0.400 Adapter ring	7K2363	–	–	–	–	
10	Machined stage assembly (4)(5)	7K3252	7K3254	–	–	–	
11	Stage assembly	7K3251	7K3253	7K3255	7K3256	7K3257	
12	Intermediate bearing hsg. (1)(2)(3)	7K2369					
13	Intermediate bearing (1)(2)(3)	7K3231					
14	Intermediate shaft sleeve (1)(2)(3)	7K209	7K3056				–
15	Lower shaft sleeve	7K1320	7K1336				–
16	Lower adapter ring	7K2372					
17	Motor adapter	7K2374					
18	Inlet strainer	7K2375					
19	Cable guard screw	13K91					
20	Casing	1/2	7K2531	–	7K2521	7K2516	–
		3/4	7K2540	–	7K2526	7K2519	7K2518
		1	7K2546	–	7K2530	7K2522	7K2523
		1 1/2	7K2553	–	7K2536	7K2528	7K2533
		2	–	–	7K2543	7K2536	7K2537
		3	–	–	7K2550	7K2545	7K2549
		5	–	–	–	–	–
21	Shaft assembly	1/2	7K3275	–	7K3266	7K3219	–
		3/4	7K3249	–	7K3270	7K3263	7K3245
		1	7K3238	–	7K3274	7K3268	7K3269
		1 1/2	7K3303	–	7K3280	7K3237	7K3276
		2	–	–	7K3289	7K3281	7K3234
		3	–	–	7K3297	7K3291	7K3295
		5	–	–	–	–	–
22	Cable Guard	1/2	7K2492	–	7K2483	7K2478	–
		3/4	7K2502	–	7K2488	7K2481	7K2480
		1	7K2453	–	7K2492	7K2484	7K2485
		1 1/2	7K2515	–	7K2498	7K2490	7K2494
		2	–	–	7K2505	7K2498	7K2499
		3	–	–	7K2512	7K2507	7K2511
		5	–	–	–	–	–



Red Jacket Water Products is a licensed trademark. Enduro and the ITT Engineered Blocks Symbol are registered trademarks and tradenames of ITT Corporation.
SPECIFICATIONS ARE SUBJECT TO CHANGE WITHOUT NOTICE.

RRJENDUR2 June, 2008
© 2008 ITT Water Corporation

Engineered for life