

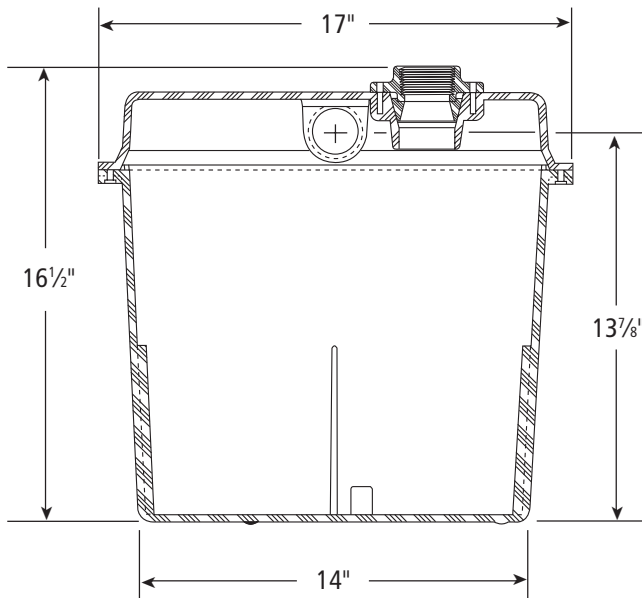
RSDSST

Sink Drain System

1½" NPT Discharge



Specifically designed for the following uses: Laundry tray, wet bar sink, air conditioning or dehumidifier condensate, residential dishwashers, and beautician sinks.



Maximum solid size: ½"

Discharge Size: 1½" NPT Thread

Maximum capacity: 50 GPM

Maximum Total Head: 26 feet

Stainless steel fasteners

Power cord: 10' long with NEMA three prong grounding plug.

Fully assembled at the factory for simplified installation

Capable of running dry without damage to components

Severe rated oil and water resistant power cable

Basin: 10 gallon structural foam basin; Dimensions: 17" diameter x 13⅞" high; 1½" NPT threaded vent, discharge and inlet connections; 1½" schedule 40 PVC discharge pipe (internal).

Pump: RSC31AV, ⅓ HP, ½" solids handling sump pump with built-in Vertical Master® vertical level switch

Structural foam, 10 gallon basin and cover with built-in threaded inlet, vent and discharge connections for simple installation

Cord grommet for power cord sealing



Tested to UL 778 and
CSA 22.2 108 Standards
By Canadian Standards
Association

Red Jacket Water Products is a licensed trademark.

The ITT Engineered Blocks symbol is a registered trademark and tradename of ITT Industries.

Visit us at: www.redjacketwaterproducts.com

Effective June, 2003

BRJSDSST-R1

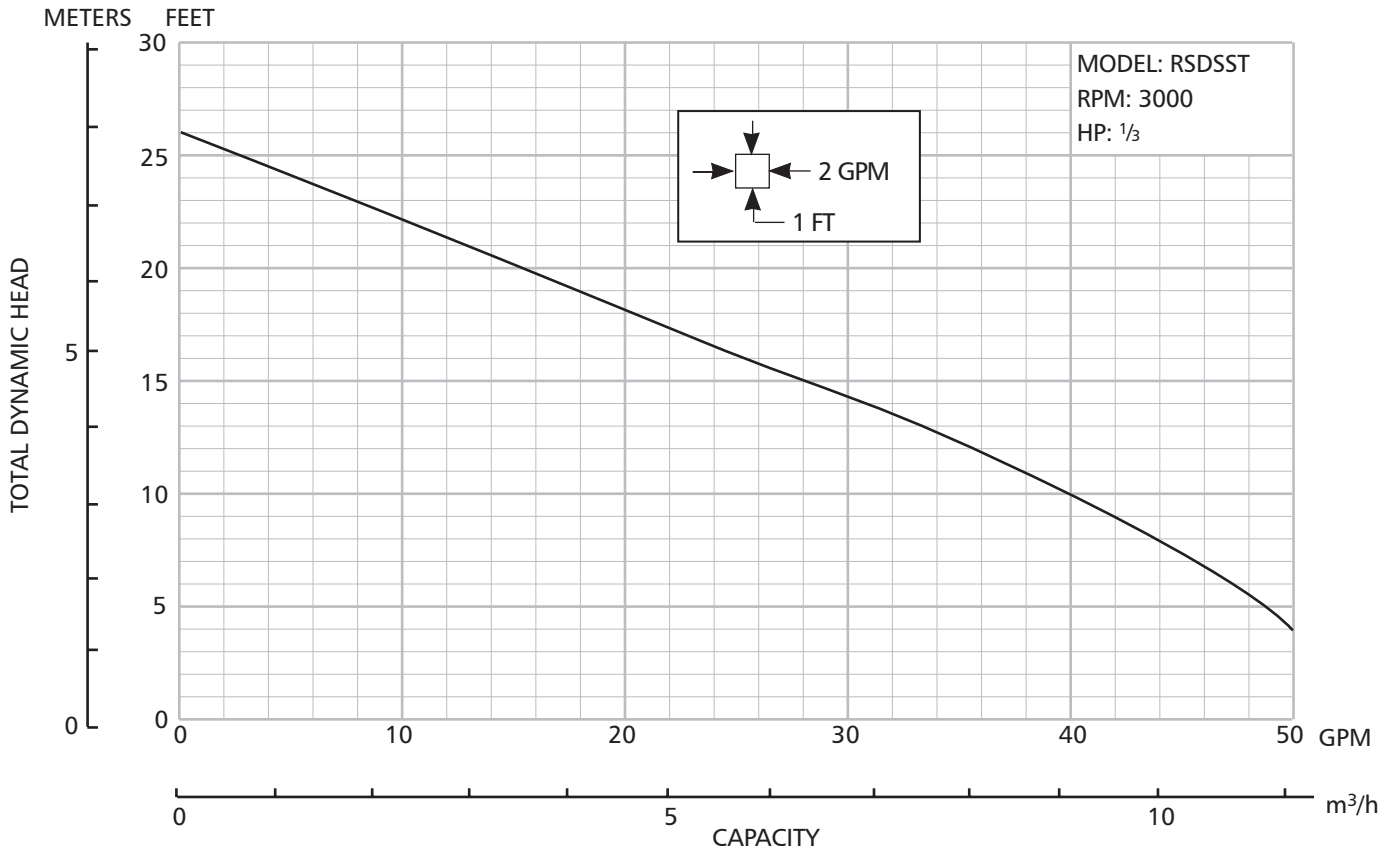


ITT Industries

RSDSST

Sink Drain System
1½" NPT Discharge

PERFORMANCE CURVE



MOTOR FEATURES

HP: .33, Volts: 115, 1Ø
Hertz: 60
RPM: 3000
Maximum amps: 12.0
Maximum ambient temperature: 104° F (40° C) continuous duty.
Rated for continuous duty when fully submerged.
Insulation: Class B
Overload Protection: On-winding, automatic reset, thermal overloads.

PERFORMANCE RATINGS

Total Head (feet of water)	GPM	GPH
4	50	3,000
10	40	2,340
15	28	1,680
20	15	900

