

ITT

Wastewater

CentriPro Elevator Sump Package Components



A1SEEWATER
Oil Smart Switch



S120ENPR
Environment
Protector Panel

The Oil Smart Switch with CentriPro Environment Protector Panel, when combined with a pump, allows water to be pumped from Elevator sumps, leachate wells and transformer vaults without danger of pumping oil into sewers and waterways.

FEATURES

- Protects environment from hazardous waste
- The solid state device senses between oil and water
- Panel and switch can be used with any pump up to 20 amps, single phase 115 volt or 230 volt
- Only operates pump if water is sensed by probes. Does not operate if oil is present in pit.



CentriPro is a brand of ITT Corporation.

www.centripro.com

Engineered for life



ITT

CENTRIPRO Wastewater

FEATURES FOR SWITCH

- Solid state sensing device that differentiates between oil and water
- Two sense points, Pump On and Pump Off, reduces the risk of pumping oil or other hydrocarbons into the environment
- Includes mounting hardware
- Pump On position is the shorter rod
- Pump Off position is the longer rod
- Pumping Differential: 6"
- Dimensions: 2.5" wide x 6" high (body less rods) x 1.75" deep.
- Completely encapsulated and water-tight.
- CE, UL 508, UL Marine and CUL Listings
- Exceeds U.S. Coast Guard Standards.
- Complies with State and Federal regulations and reduces the risk of adverse publicity and expensive cleanup costs.
- A1SEEWATER model has a 20' cord with bare leads for connection to a control panel.
- We recommend mating this switch with control panel S120ENPR which features a terminal strip for simple connections for the pump, A1SEEWATER switch and a high level alarm float switch. See product bulletins BS120ENPR and BCPFS for additional information or go to www.centripro.com.

FEATURES FOR PANEL

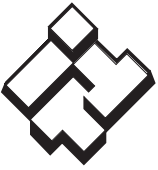
- Simplex, 115 or 230 volt, 1Ø Panel in rugged NEMA 4X fiberglass enclosure with locking hasp and hinged door.
- Use with our model A1SEEWATER Oil Smart sensor to control a sump/effluent pump in areas where oil may be present.
- The sensor differentiates between oil and water. The panel and sensor will not allow the pump to operate unless water is present, eliminating environmental contamination and costly oil cleanups.
- High level alarm features a top mounted high intensity red alarm light with 360° visibility and a 95db corrosion resistant alarm horn.
- Terminal strip with connections for:
 - Pump: 1Ø/115/230 volt, maximum 20 amps
 - High water float – A2N33 (20') recommended
 - A1SEEWATER Sensor/Switch
 - Dry contacts for remote alarm
- Entire panel is UL and CUL Listed.

RECOMMENDED CONTROL PACKAGE

A1SEEWATERKIT

Includes:

- S120ENPR – Panel
- A1SEEWATER – Oil Smart Switch
- A2N33 – 20 foot Alarm Float Switch Bare Leads
(Pump 1Ø up to 20 Amps - purchased separately)



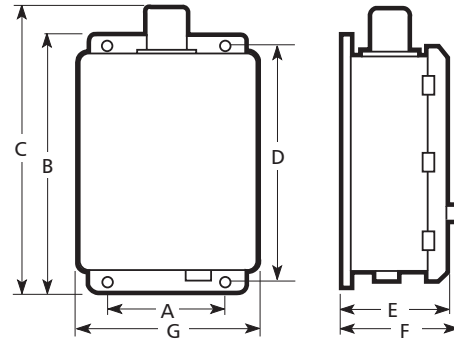
ITT

CENTRIPRO Wastewater

ENCLOSURE DIMENSIONS (IN INCHES)

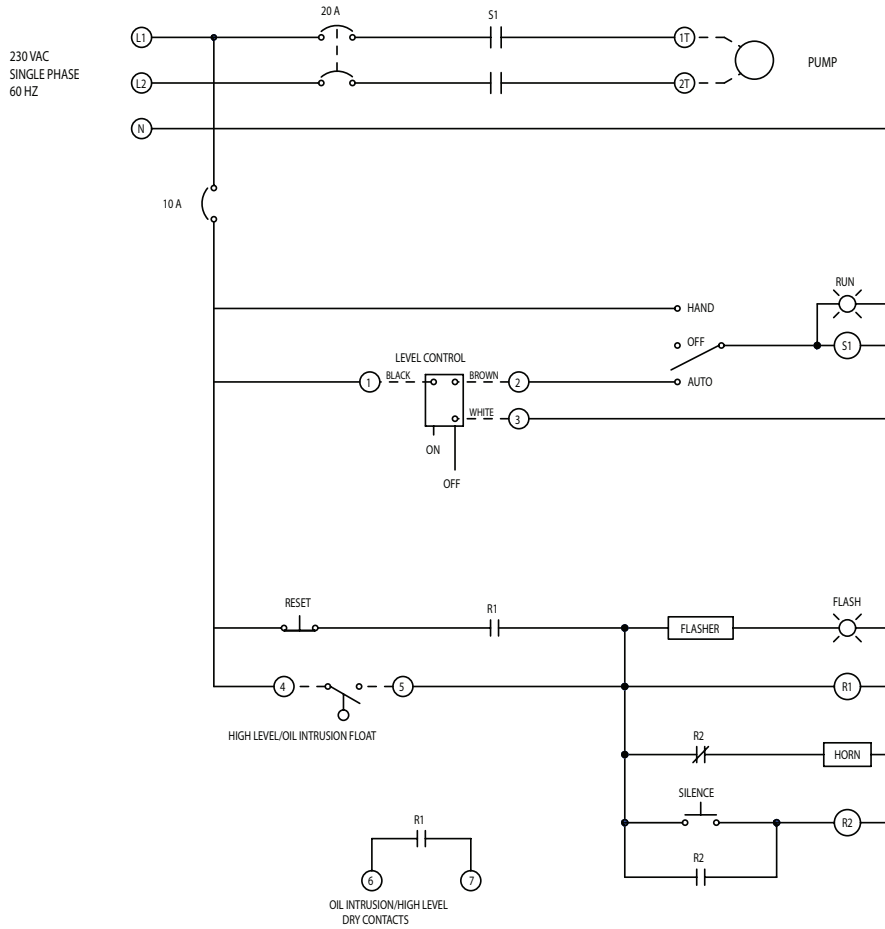
Single Phase

A	B	C	D	E	F	G
6.3	11.5	14.3	10.8	5.5	6.0	9.3



WIRING DIAGRAM

FOR 115 VOLT OPERATION
USE TERMINALS (L1) AND (N)
JUMP TERMINALS (N) AND (L2)

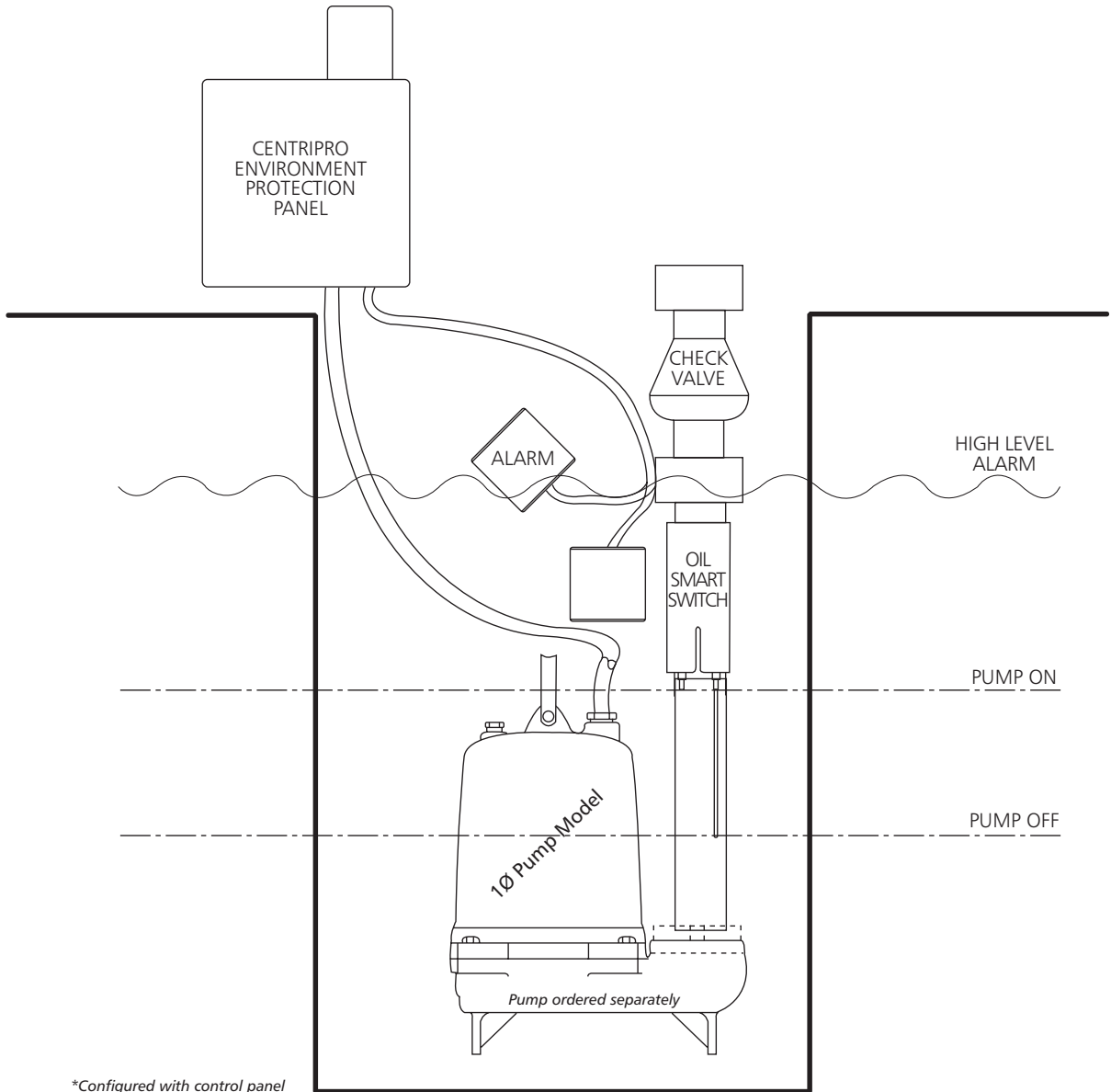




ITT

Wastewater

PUMP INSTALLATION



*Configured with control panel



CentriPro, See Water and the ITT Engineered Blocks Symbol are registered trademarks and tradenames of ITT Corporation.

Oil Smart is a registered trademark of See Water Inc.

SPECIFICATIONS ARE SUBJECT TO CHANGE WITHOUT NOTICE.

BCPESPC August, 2007

© 2007 ITT Corporation

Engineered for life