



ITT

BCPBPack R1

Wastewater

CentriPro BASIN PACKAGE



FEATURES

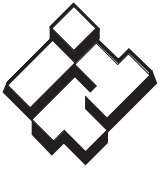
- Completely assembled basin kit for 2" connection.
- Simplex and duplex configurations available.
- Conery base elbow disconnects 2" – also available in 1¼" and 1½" by request.
- Easy pump installation.
- Valves and piping complete.
- True Union isolation valve.
- Stainless steel guide rails.
- Installed stainless steel float bracket.
- Cast iron inlet hub shipped loose.



CentriPro is a brand of ITT Corporation.

www.centripro.com

Engineered for life



ITT

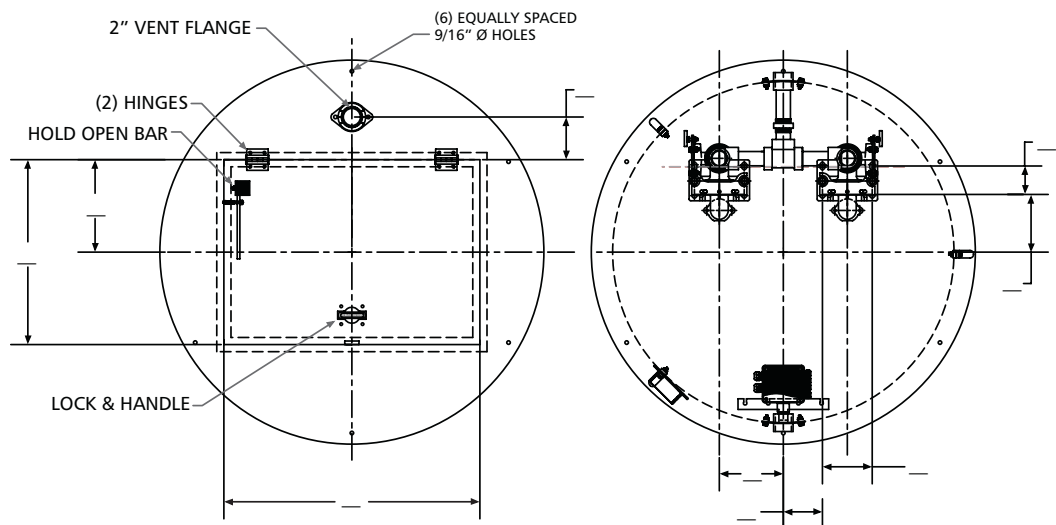
CENTRIPRO Wastewater

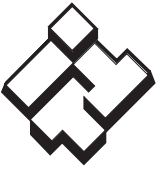
BILL OF MATERIALS FOR BASIN KITS

- Basin in specified size
- Studs for slide rail attachment
- 2" SS discharge coupling
- Nylon electric coupling
- 4" CI hub for inlet – shipped loose
- Conery base elbow system(s)
- SS upper guide rail bracket
- Conery SS intermediate guide rail bracket (used on 84" and deeper)
- 10' SS lift-out chain package(s)
- 1" SS guide rail
- 2" PVC SCH 80 discharge pipe
- 2" PVC True Union ball valve
- 2" PVC ball check valve
- 2" PVC SCH 80 elbow
- 2" PVC SCH 80 union
- 2" PVC SCH 80 reducer bushing (thread by slip)
- SS Ext handle bracket
- Basin lifting lugs
- SS cross braces for upper guide rail bracket and intermediate bracket
- SS float bracket
- SS nuts, bolts and washers
- 3 (simplex) or 4 (duplex) Conery mechanical floats and weights
- Junction box NEMA 4X
- Steel hatch cover – duplex only
- Solid fiberglass cover – simplex only

BASIN KIT TOP VIEW

NOTE: MEASUREMENTS OF BASINS ARE ALL I.D.,
IF NOT OTHERWISE SPECIFIED.
SAMPLE DRAWING



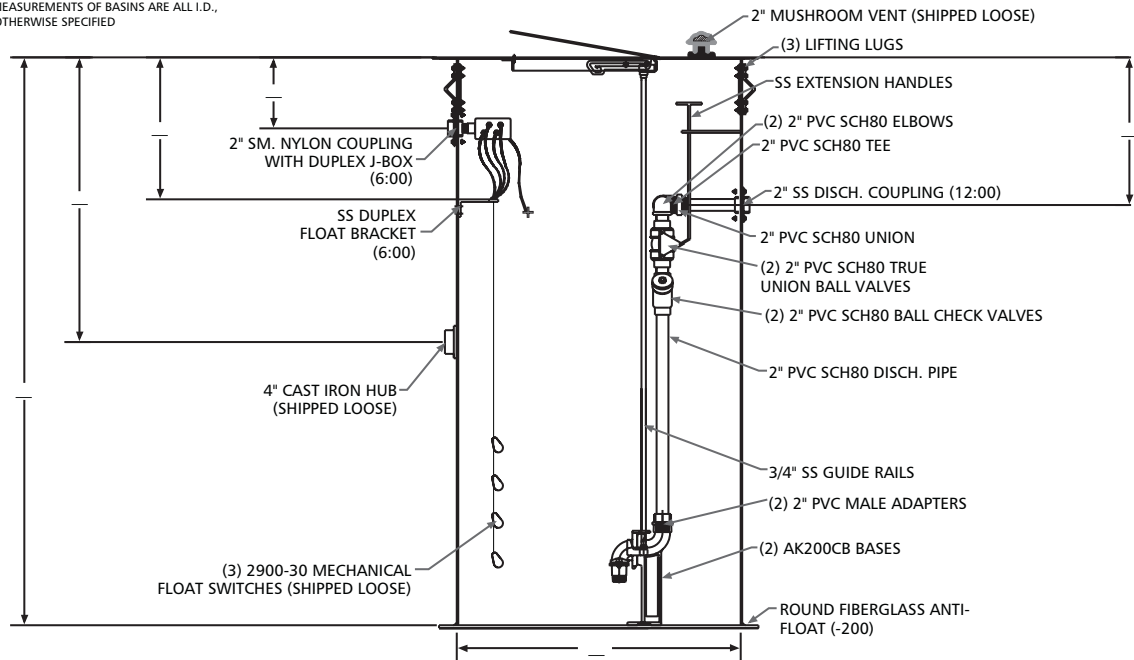


ITT

CENTRIPRO Wastewater

BASIN KIT DIMENSIONAL

NOTE: MEASUREMENTS OF BASINS ARE ALL I.D.,
IF NOT OTHERWISE SPECIFIED



BASIN KIT ORDER NUMBERS

SIMPLEX

Order No.	Discharge Size	Discharge Depth	D X H Basin Size
S20B2448	2"	12"	24 x 48
S20B2460	2"	24"	24 x 60
S20B2472	2"	36"	24 x 72
S20B2484	2"	48"	24 x 84
S20B2496	2"	48"	24 x 96
S20B24108	2"	48"	24 x 108
S20B24120	2"	48"	24 x 120
S20B3048	2"	12"	30 x 48
S20B3060	2"	24"	30 x 60
S20B3072	2"	36"	30 x 72
S20B3084	2"	48"	30 x 84
S20B3096	2"	48"	30 x 96
S20B30108	2"	48"	30 x 108
S20B30120	2"	48"	30 x 120

DUPLEX

Order No.	Discharge Size	Discharge Depth	D X H Basin Size
D20B3648	2"	12"	36 x 48
D20B3660	2"	24"	36 x 60
D20B3672	2"	36"	36 x 72
D20B3684	2"	48"	36 x 84
D20B3696	2"	48"	36 x 96
D20B36108	2"	48"	36 x 108
D20B36120	2"	48"	36 x 120
D20B4848	2"	12"	48 x 48
D20B4860	2"	24"	48 x 60
D20B4872	2"	36"	48 x 72
D20B4884	2"	48"	48 x 84
D20B4896	2"	48"	48 x 96
D20B48108	2"	48"	48 x 108
D20B48120	2"	48"	48 x 120

NOTE:

Alternate sizes and features available upon request.

